

The construction activity

The ground work and basic piping started in the summer of 2007, and completion is expected in the fall of 2009. Below is a selection of pictures from different stages of construction.



The site before building began. The old 11 m ponds will be removed.



The levelled site with intake pipes in place.



The main outflow pipes are placed in position.



The foundations for the hall.



Cabling is laid for electricity, data and telecommunications along with the pipework for the cooling system.



Framework constructions for the hall.



Main construction for the hall.



A sunken area is framed in, there is a 12 m³/min pump sump visible in the foreground.



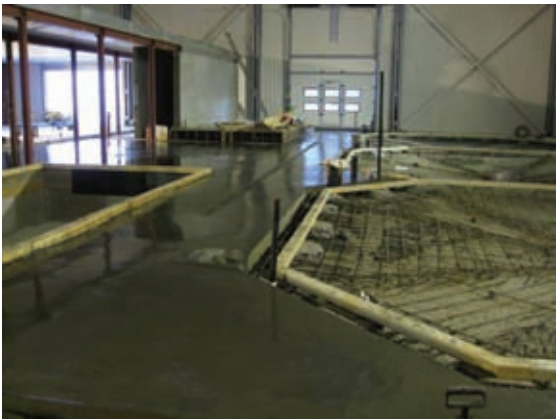
Outflow apparatus in the research hall. The arrangements permit a full range of options for water quality.



Concreting is completed in the central water treatment room.



24 m³ moving bed bioreactors for the small RAS 1 and 2 prior to installation.



Concreting is completed in the growing on facility.